



**CPCRN**  
Cancer Prevention and  
Control Research Network

# Implementing Evidence into Action Workgroup



Jackilen Shannon, PhD, MPH  
 Kerri Winters-Stone, PhD  
 Paige Farris, MSW  
*Oregon Health & Science University*



Jennifer Leeman, DrPH, MDiv  
 Avia Mainor, MPH  
 Kasey Decosimo, MPH  
*University of North Carolina*





**CPCRN**  
Cancer Prevention and  
Control Research Network

# Implementing Evidence into Action Workgroup

Karen Glanz, PhD



**Penn**

Alyssa Yackle, MPA

*University of Pennsylvania*

Wynne Norton, PhD

Cynthia Vinson, PhD

*National Cancer Institute*



Allison Cole, MD

Linda Ko, PhD

Thuy Vu, MPH

*University of Washington*



Anatasha Crawford, PhD

*Center for Disease Control*



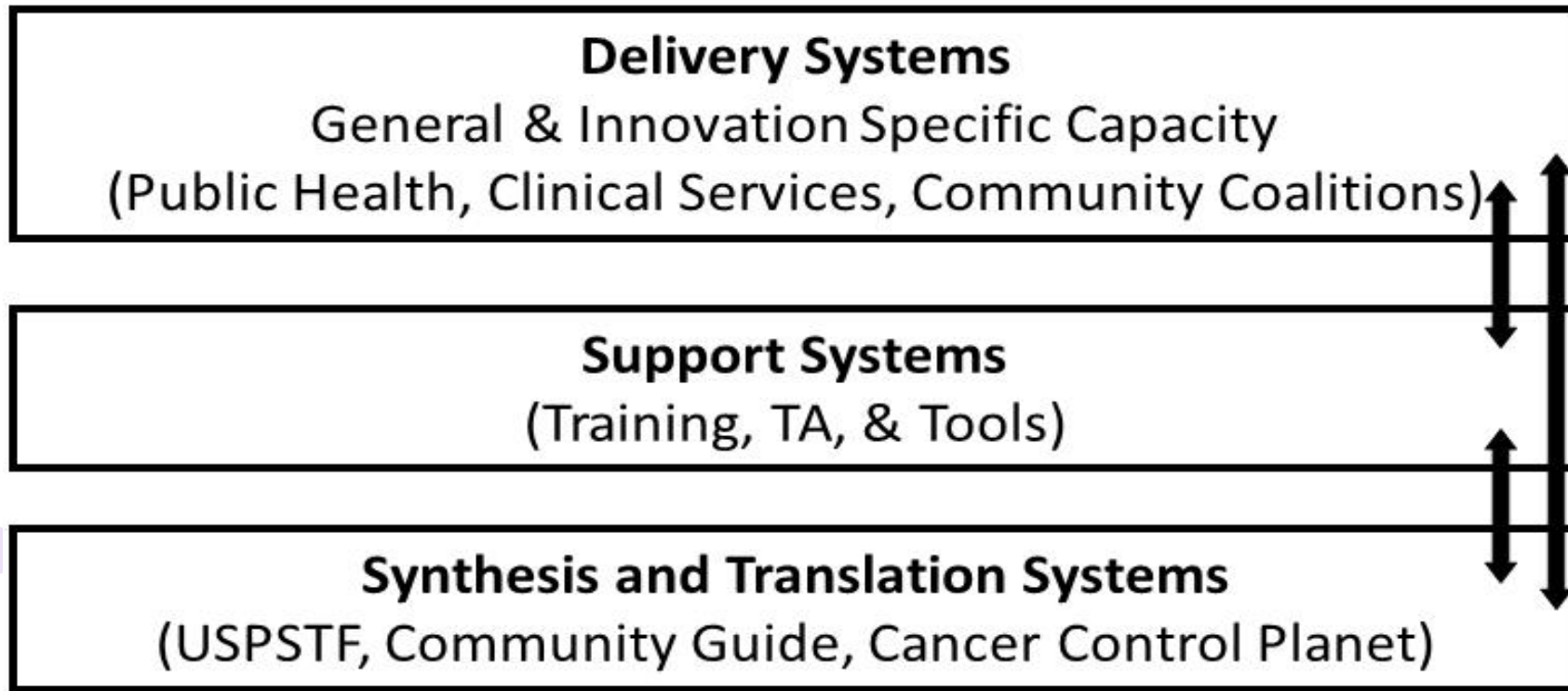
Catherine Rohweder, DrPH

*University of North Carolina*



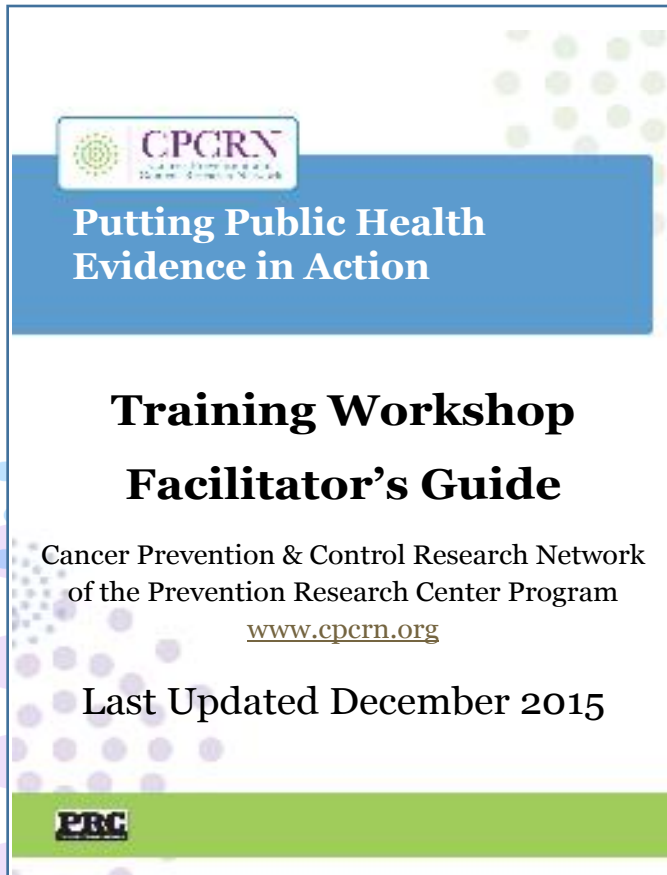
# Workgroup Builds on Wandersman's ISF for Dissemination and Implementation

## Interactive Systems Framework



(Wandersman et al., 2008; 2012)

# Scaling up CPRN's Putting Public Health Evidence in Action Curriculum



- CPRN's training builds practitioners' general capacity to select, adapt, and implement evidence-based interventions
- Training involves 1 to 2-day in-person workshops
- How might we scale-up the training and extend its reach?

Located at:

<http://cpcrn.org/pub/evidence-in-action/>



# Approaches Used to Scale-Up Training

**3 years (2013-16)**

**2 states (NC & OR)**

**252 total  
participants**

## Online Modules

- Asynchronous
- Interactive, skill-building activities
- Learning tools

## In-person and Videoconference

- Synchronous
- Interactive, skill-building activities
- Learning tools
- Peer networking

# Survey Findings (n=252)

	<u>Response Rates</u>	<u>Satisfied Overall</u> Agree/Strongly Agree	<u>Job Relevance</u> Agree/Strongly Agree
In-person	70%	88%	93%
Videoconferencing	87%	75%	93%
Online Modules	62%	92%	90%

# Survey Findings (Likert Scale & Open-ended)

## Online Modules

- Participants valued asynchronous delivery

## In-person Modules

- Participants valued interpersonal interactions
  - Consulting with Course Faculty
  - Networking with Peers

## Videoconferencing

- Participants dissatisfied with inconvenience and limited interaction

# Publications and Presentations

- Mainor AG, Decosimo K, Escoffrey C, Farris P, Shannon J, Winters-Stone K, Williams B, Leeman J. **Scaling-Up and Tailoring the “Putting Public Health in Action” Training Curriculum.** Health Promotion Practice (under review).
- Mainor AG, Decosimo KP, Leeman J, Escoffery C, Farris P, Shannon J, Winters-Stone K, Williams B. **Scaling-up *Evidence in Action*: A collaborative process to effectively extend the reach of an evidence-based decision making curriculum for local practitioners.** Oral presentation submitted to the 2017 American Public Health Association Annual meeting (under review).



# Workgroup's Next Steps

- Continue to evaluate training effectiveness in OR and other settings
- How to build impact AND identify factors associated with success?
  - 1) R21 being developed for June submission to assess organizational, community and implementation factors of all CPP funded projects
  - 2) Special call for communities to implement the CDC “Step it Up” community walking program
    - Training will be provided and evaluations will be conducted to assess implementation factors associated with success

MORE ABOUT THIS DURING “Ideas Discussion”